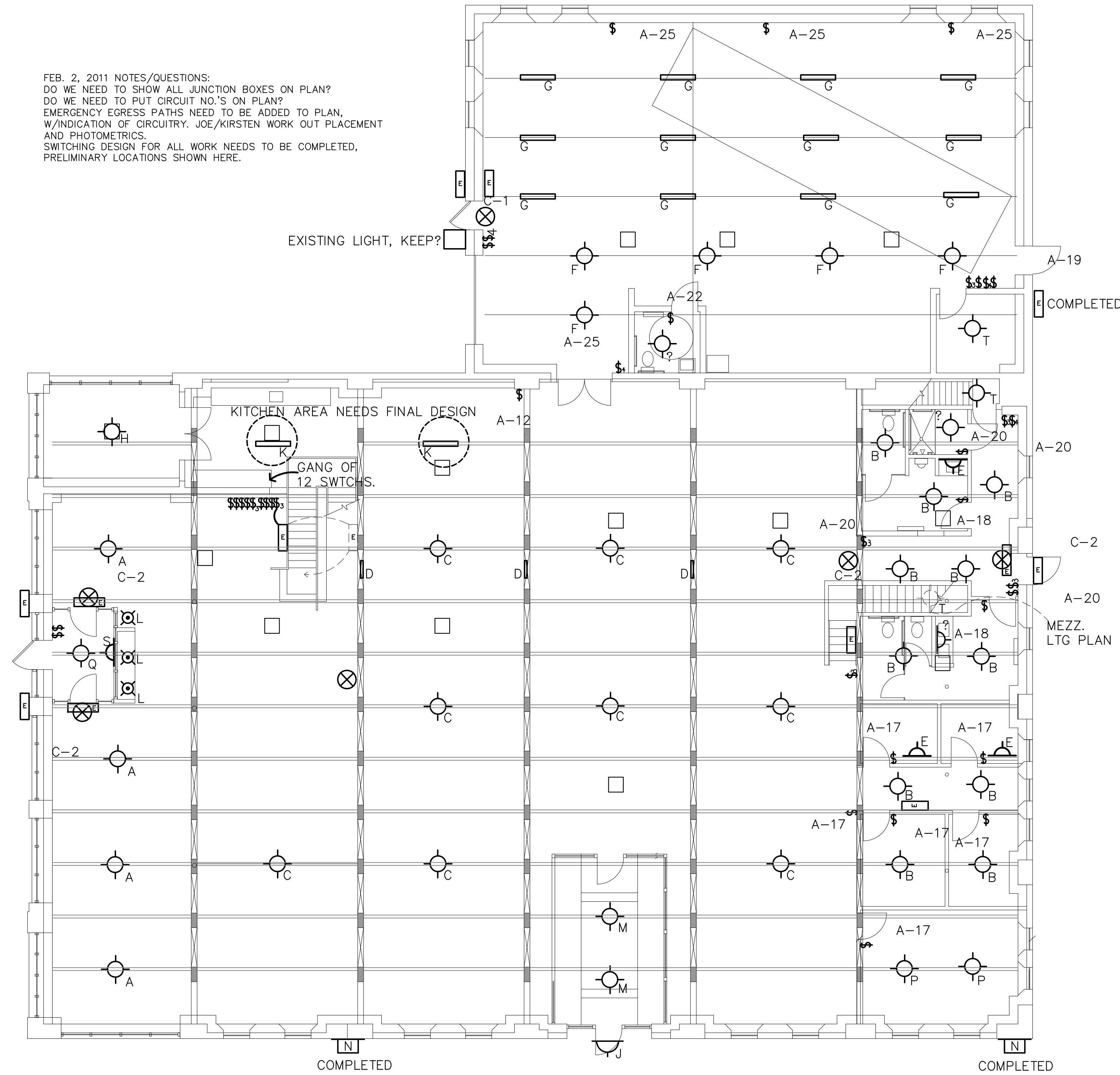
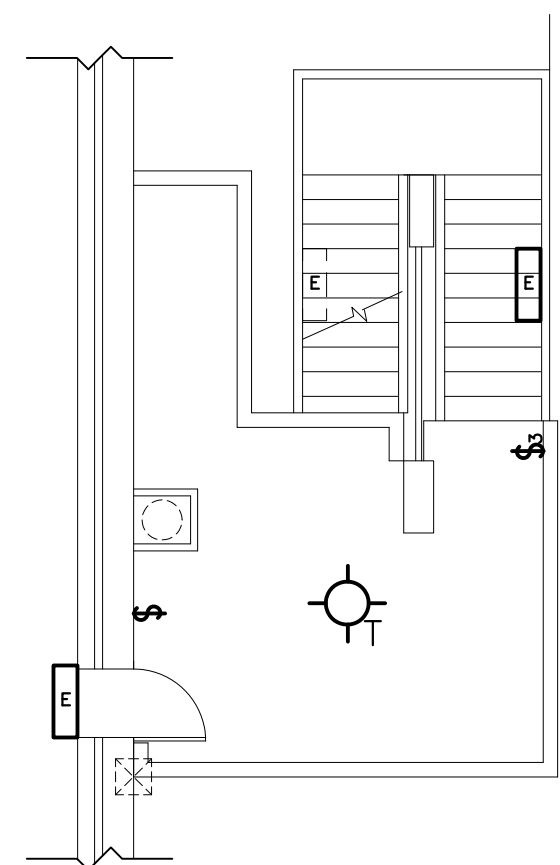


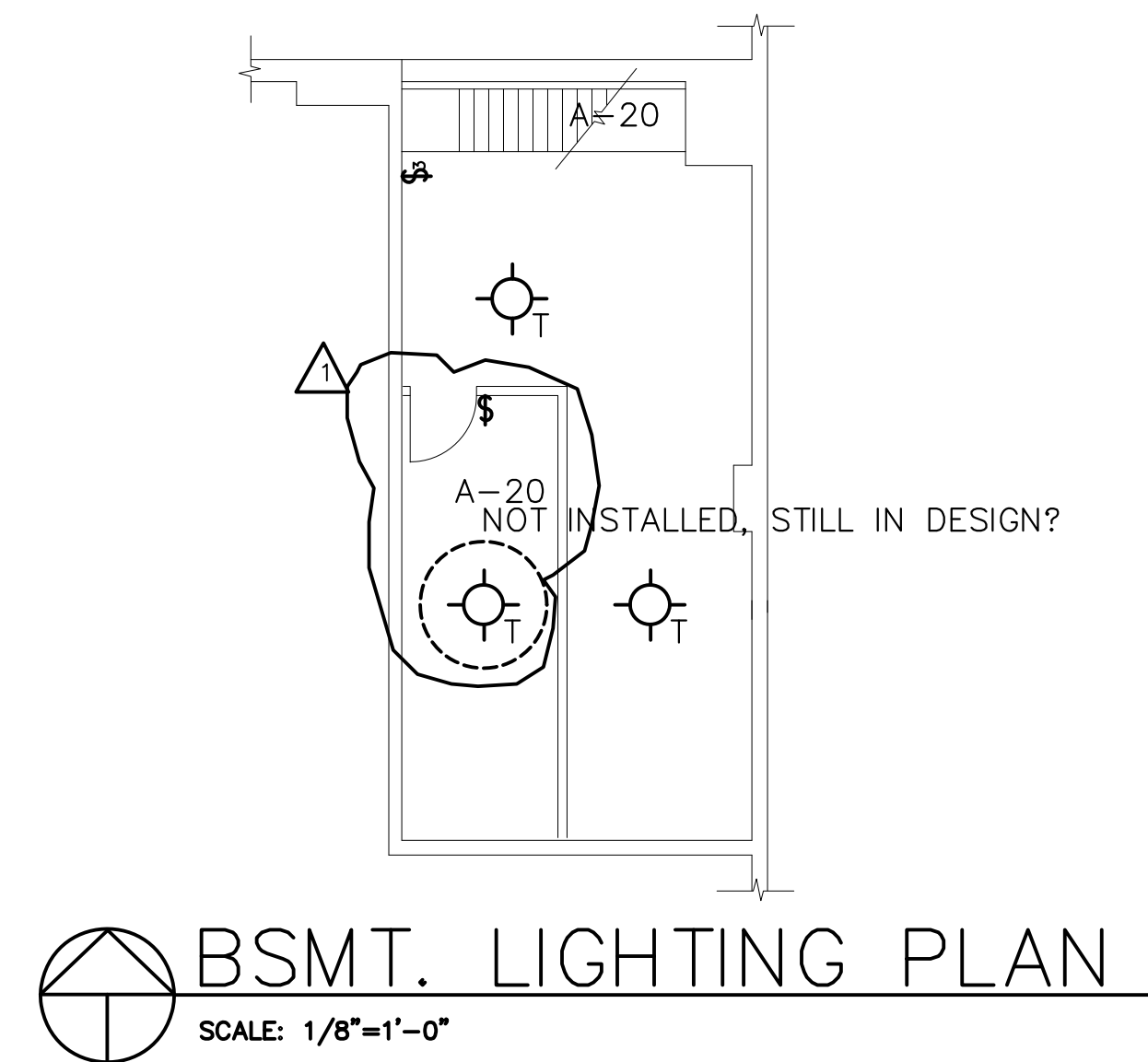
FEB. 2, 2011 NOTES/QUESTIONS:
 DO WE NEED TO SHOW ALL JUNCTION BOXES ON PLAN?
 DO WE NEED TO PUT CIRCUIT NO.'S ON PLAN?
 EMERGENCY EGRESS PATHS NEED TO BE ADDED TO PLAN,
 W/INDICATION OF CIRCUITRY. JOE/KIRSTEN WORK OUT PLACEMENT
 AND PHOTOMETRICS.
 SWITCHING DESIGN FOR ALL WORK NEEDS TO BE COMPLETED,
 PRELIMINARY LOCATIONS SHOWN HERE.



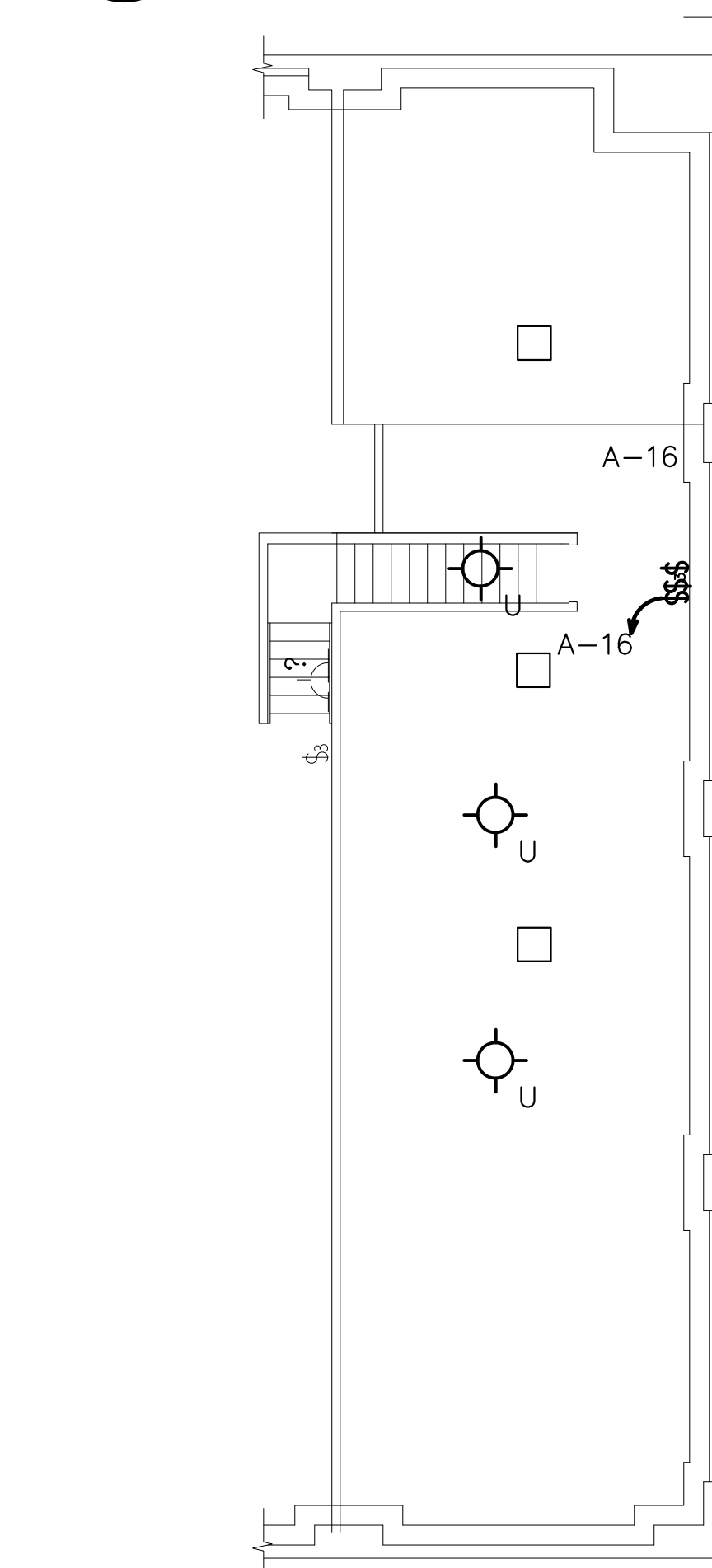
ELECTRICAL LIGHTING PLAN
 SCALE: 1/8"=1'-0"



FRONT MEZZ. LIGHTING PLAN
 SCALE: 1/8"=1'-0"



BSMT. LIGHTING PLAN
 SCALE: 1/8"=1'-0"



MEZZ. LIGHTING PLAN
 SCALE: 1/8"=1'-0"

ELECTRICAL FIXTURE SCHEDULE

MARK	QTY.	DESCRIPTION
A	(4)	FLUSH-MOUNT FIXT. RECOVERED FR. ST. PAUL'S SCHOOL, NEEDS RETRO-FITTING/REWIRING, LOW-ENERGY DESIGN
B	(11)	FLUSH-MOUNT FIXTURE, REJUVENATION, MODEL: ALMA #A4976, 60W., 1 BULB.
C	(9)	FOCAL POINT FUSION PENDANT FIXTURE, RUW
D	(3)	BARTCO ESSENCE IPR5R FLUSH-MOUNT 2 FT. LONG, 1@24-WATT LAMP PER FIXTURE, EMERGENCY LIGHTING
E	(3)	SCONCE FIXTURE, ST. HELENS, MODEL: W151, 100W., 1 BULB.
F	(11)	FLUSH FIXTURE, EXISTING, W/ PORCELAIN SKT, 60W., 1 BULB. (NEEDS SWITCHING/REWIRING)
G	(9)	SUSPENDED FIXTURE, EXISTING SHOP LIGHT FLUORESCENT, 80W., 2 BULBS. (COMPLETED)
H	(1)	PENDANT FIXTURE, DAMP LOCATION, T.B.D.
J	(2)	WALL MOUNTED, GUTH, MODEL: SUNDOWNER #SND14B20LSI, 35W., 20 LED LIGHTS.
K	(2)	SUSPENDED FIXTURE, FINELITE SERIES: S10-PLVV-STO-278-91W, 36W., 1 BULBS.
L	(3)	RECESSED CAN LIGHTS, HALO
M	(3)	PENDANT FIXTURE, T.B.D. (SCHOOLHOUSE)
N	(2)	NEW INDUCTION OUTDOOR LIGHT
P	(2)	FLUSH-MOUNT FIXTURE, REJUVENATION, MODEL: THURMAN #A5162, 60W., 1 BULB.
Q	(1)	PENDANT FIXTURE, HISTORIC RETROFIT BOWL-SHAPE.
S	(1)	LED STRIP LIGHT
T	(5)	EXISTING FLUSH-MOUNT FIXTURE
U	(3)	ANP LIGHTING PENDANT MOUNT FIXTURE
V	(1)	RECESSED FIXTURE (HALO)

NOTE: OWNER MAY SUBSTITUTE EQUAL MODELS FOR ALL FIXTURE TYPES.



LEGEND

- \$ SINGLE POLE SWITCH, 48" AFF
- \$3,\$4 THREE-WAY SWITCH, FOUR-WAY SWITCH
- X (3) NEW LED EXIT SIGN W/BATTERY BACKUP WIRED TO LOCAL CIRCUIT
- E (10) NEW 12 WATT LED EMERGENCY LIGHT W/BATTERY BACKUP
- SOLATUBE

DATE	ISSUE FOR	DATE	BY	BULLETIN
7-19-11	OWNER REVIEW/AS BUILT			
5-10-11	OWNER REVIEW/AS BUILT			
4-20-11	AS BUILT/IN PROGRESS			
2-28-11	AS BUILT/IN PROGRESS			
2-2-11	AS BUILT/IN PROGRESS			
8-27-10	REV. PER OWNER			
8-17-09	FOR PERMIT			
8-3-09	OWNER REVIEW			

GREEN GARAGE RENOVATION
 4444 SECOND AVENUE
 DETROIT, MI 48201

Architects Planners Engineers
INTERNATIONAL INC.
 17400 Wiliamere
 Detroit, Michigan 48221
 Phone: 313-341-7930
 Fax: 313-341-6944

DESIGNED	TLB	PROJECT NO.
DRAWN	TLB	0923
APPROVED	TLB	DATE 8-30-09
SHEET TITLE		SHEET NO.