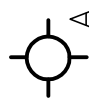

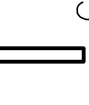
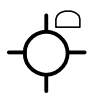

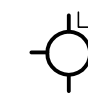

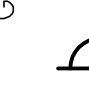
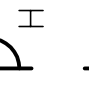


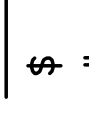
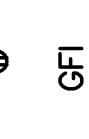







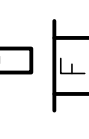
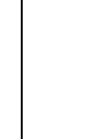

ELECTRICAL FIXTURE SCHEDULE

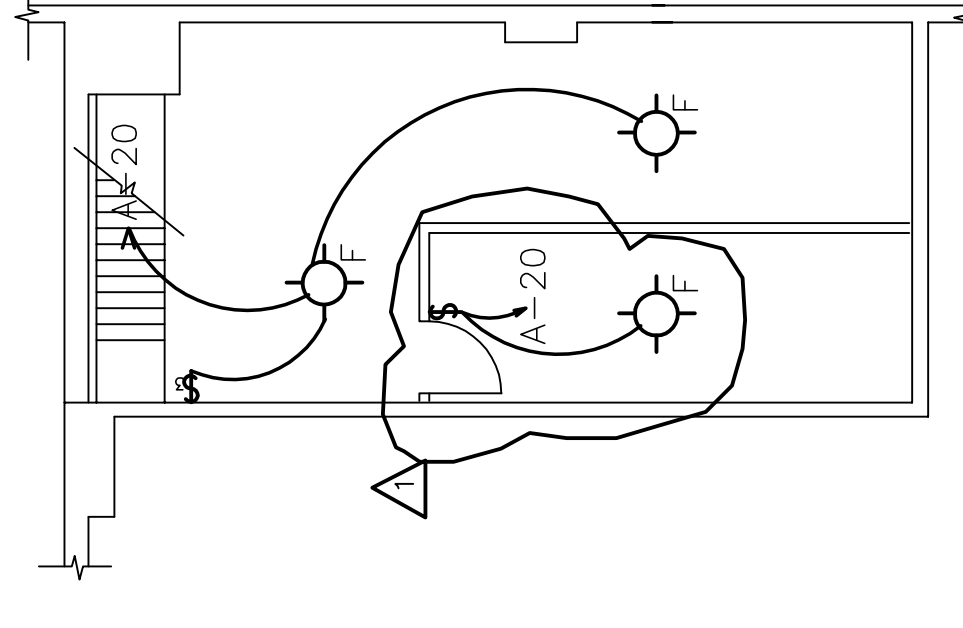
MARK DESCRIPTION

-  A PENDANT FIXTURE BY REJUVENATION, MODEL: ROSE CITY #AA5348, 100W., 1 BULB.
-  B PENDANT FIXTURE, REJUVENATION, MODEL: BRIGHTWOOD #AA0110, 60W., 1 BULB.
-  C SUSPENDED FIXTURE, FINELITE SERIES: S10-PLVV-STO-278-91W, 36W., 1 BULBS.
-  D FLUSH FIXTURE, REJUVENATION, MODEL: SABIN #AA7029, 60W., 1 BULB.
-  E SCONCE FIXTURE, ST. HELENS, MODEL: W151, 100W., 1 BULB.
-  F FLUSH FIXTURE, EXISTING, WITH PORCELAIN SOCKET, 60W., 1 BULB.
-  G SUSPENDED FIXTURE, EXISTING SHOP LIGHT FLUORESCENT, 80W., 2 BULBS.
-  H WALL MOUNTED, VISA LIGHTING, MODEL: COLONNADE #0W1042, 13W., 3 BULBS.
-  J WALL MOUNTED, GUTH, MODEL: SUNDOWNER #SND14820LSI, 35W., 20 LED LIGHTS.

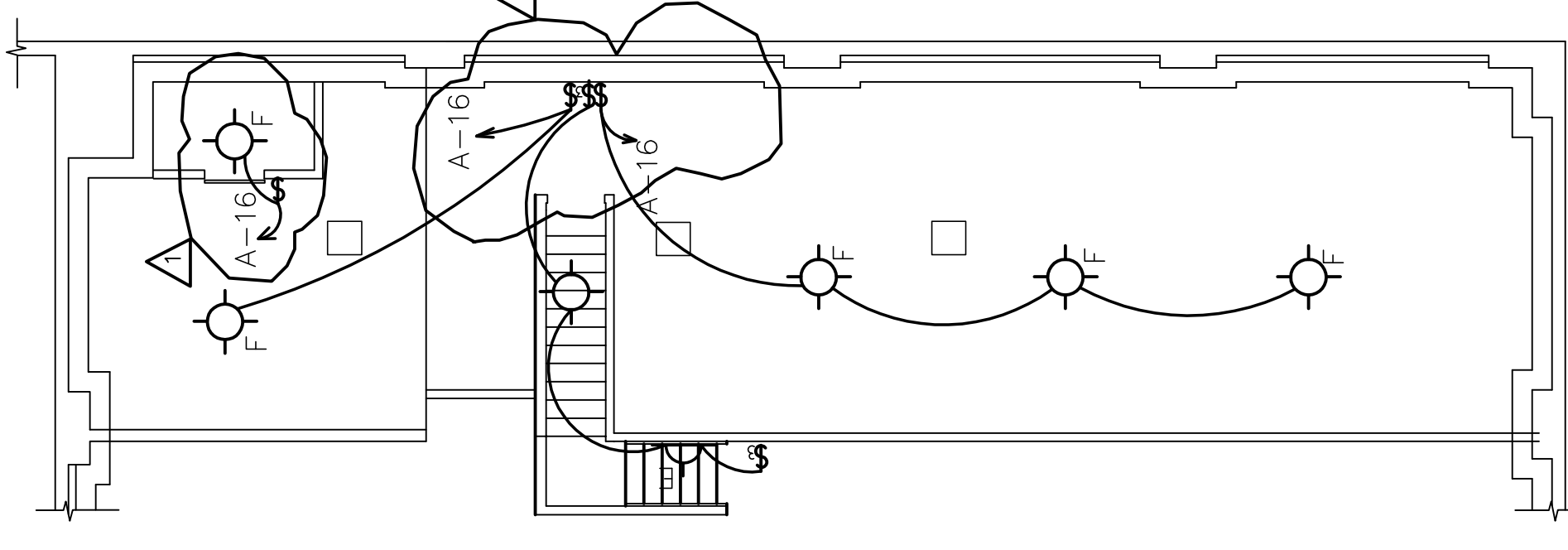
NOTE: OWNER MAY SUBSTITUTE EQUAL MODELS FOR ALL FIXTURE TYPES.

LEGEND

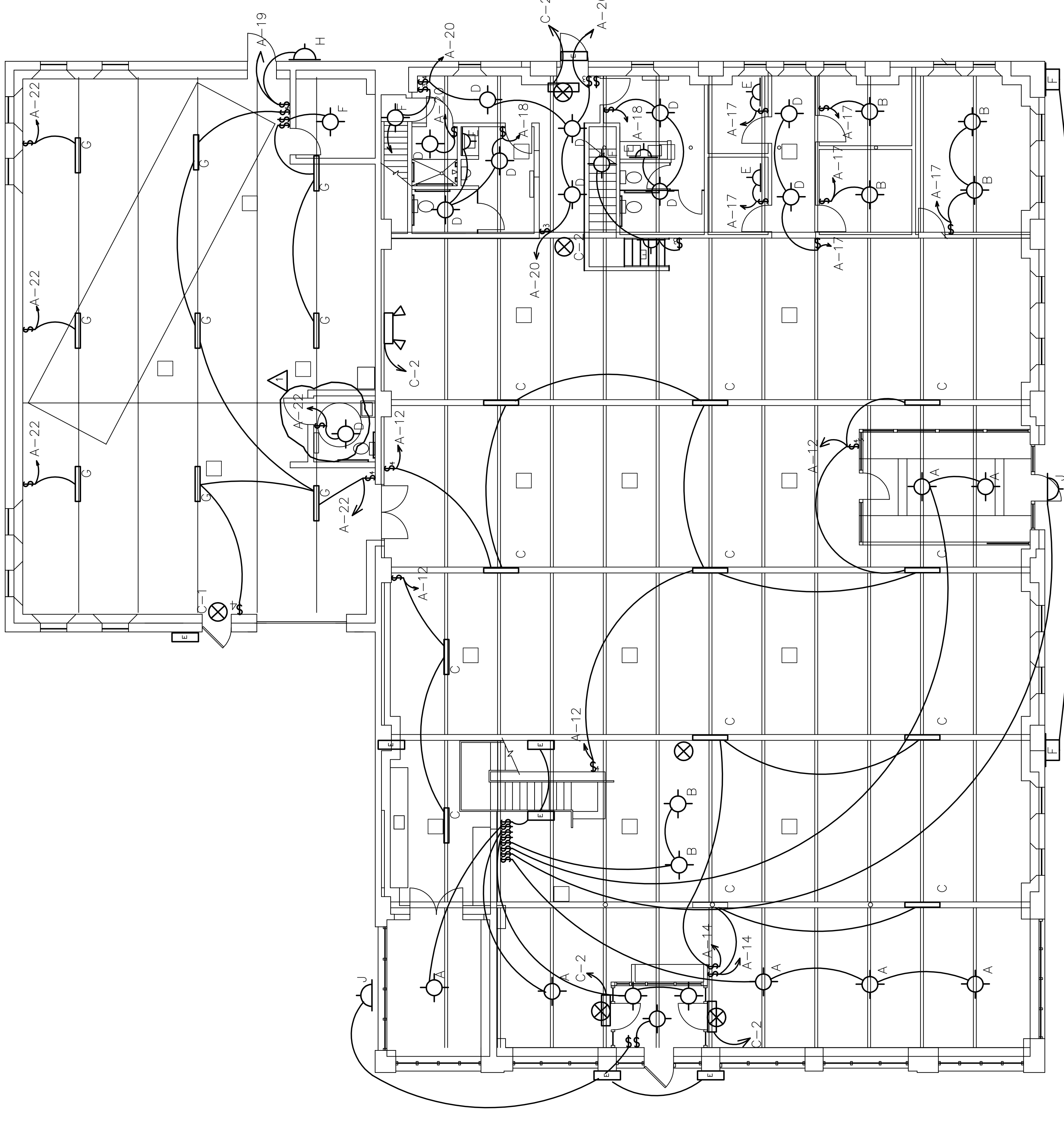
-  SINGLE POLE SWITCH, 48" AFF
-  NEW DUPLEX RECEPTACLE OUTLET
-  GFI
-  WP
-  208 V JUNCTION BOX
-  120V JUNCTION BOX
-  NEW DATA/PHONE BOX
-  NEW L.E.D. EXIT SIGN WITH BATTERY BACKUP WIRED TO LOCAL CIRCUIT
-  NEW L.E.D. EXIT SIGN & EMERGENCY LIGHT WIRED TO LOCAL CIRCUIT
-  NEW L.E.D. EMERGENCY LIGHT WIRED TO LOCAL CIRCUIT
-  NEW L.E.D. EMERGENCY LIGHT
-  NEW INDUCTION OUTDOOR LIGHT



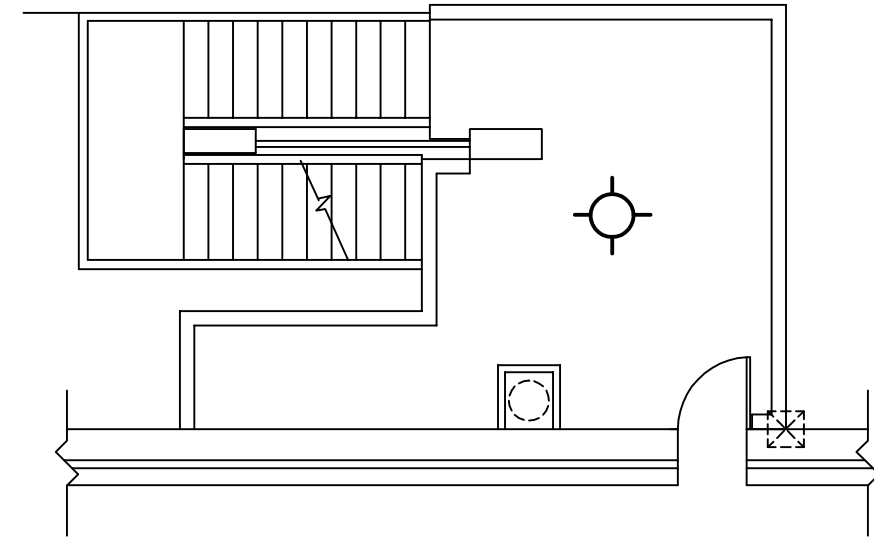
BSMT. LIGHTING PLAN
SCALE: 1/8"=1'-0"



MEZZ. LIGHTING PLAN
SCALE: 1/8"=1'-0"



ELECTRICAL LIGHTING PLAN
SCALE: 1/8"=1'-0"



FRONT MEZZ. LIGHTING PLAN
SCALE: 1/8"=1'-0"

5-27-10	REV. PER OWNER		
8-17-09	FOR PERMIT		
8-5-09	OWNER REVIEW	DATE	BY
		ISSUE FOR	REVISIONS
GREEN GARAGE RENOVATION 4444 SECOND AVENUE DETROIT, MI 48201			
Architects <i>Planners Engineers</i> ARCHITECTS INTERNATIONAL INC. 17400 Woodward Farmers Branch, TX 75244 Phone: 313-341-7930 Fax: 313-341-6944			
DESIGNED	TLB	CHECKED	TLB
DRAWN	TLB	APPROVED	TLB
		DATE	8-30-09
PROJECT NO.		0923	
SHEET TITLE		ELEC. LIGHTING PLAN	
		E-2	