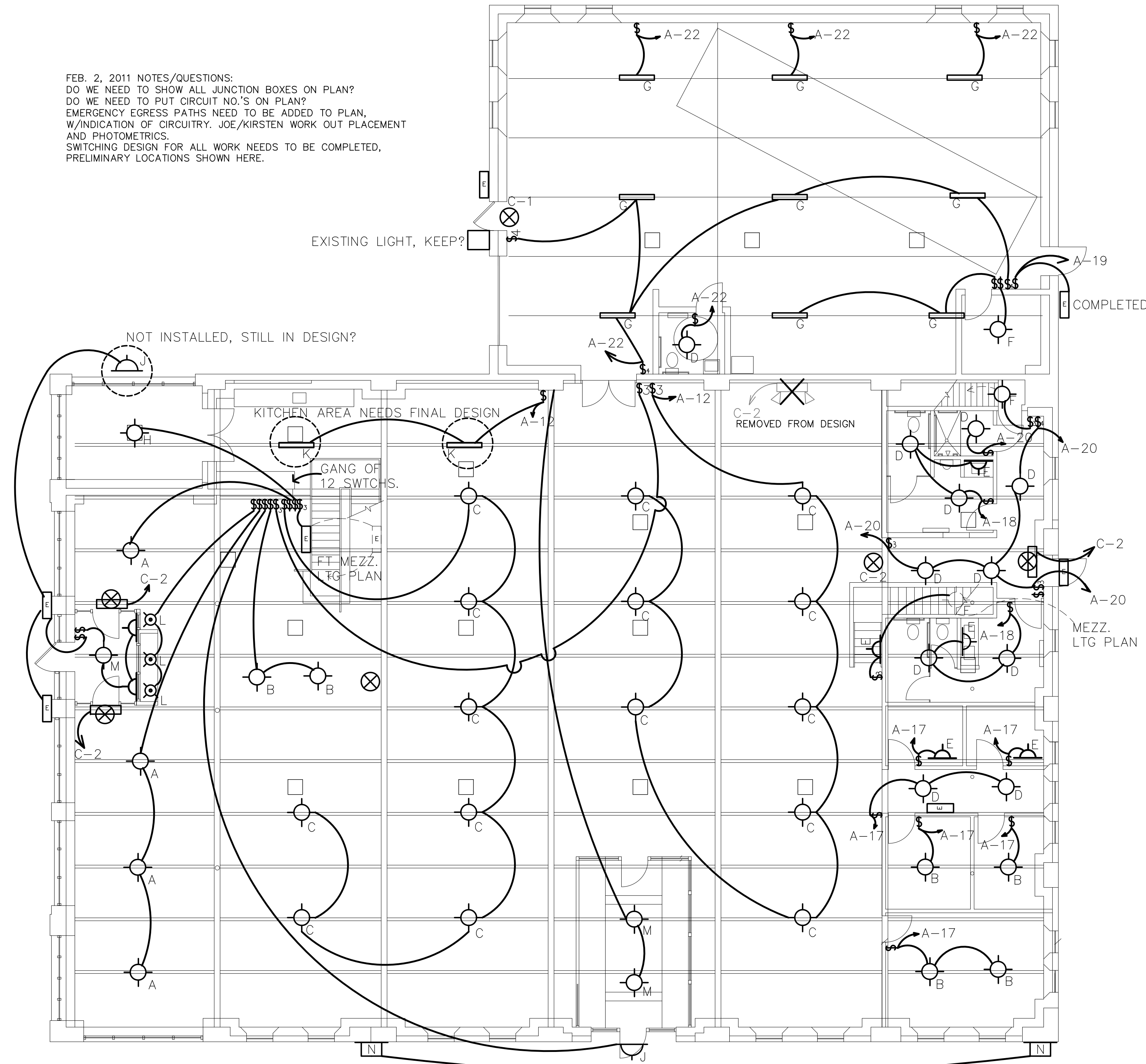
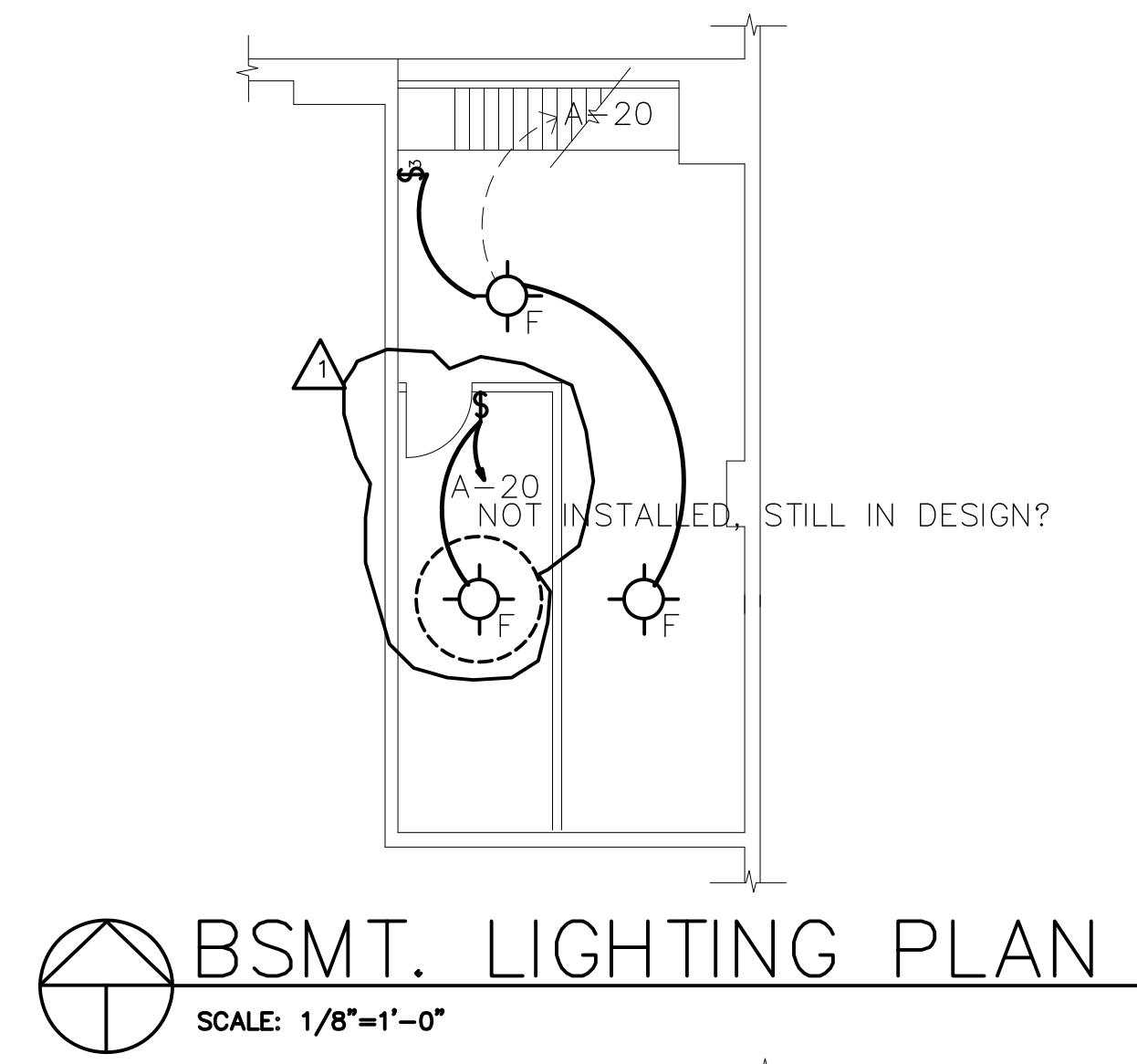


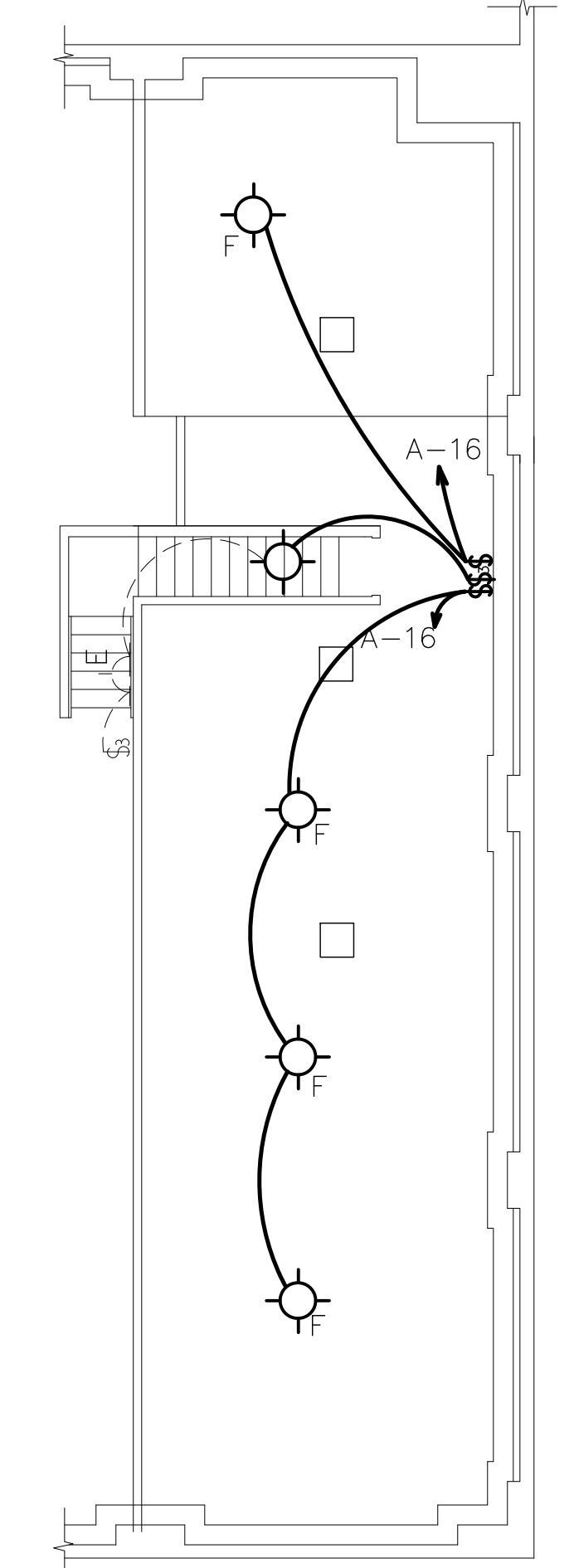
FEB. 2, 2011 NOTES/QUESTIONS:
 DO WE NEED TO SHOW ALL JUNCTION BOXES ON PLAN?
 DO WE NEED TO PUT CIRCUIT NO.'S ON PLAN?
 EMERGENCY EGRESS PATHS NEED TO BE ADDED TO PLAN,
 W/INDICATION OF CIRCUITRY. JOE/KIRSTEN WORK OUT PLACEMENT
 AND PHOTOMETRICS.
 SWITCHING DESIGN FOR ALL WORK NEEDS TO BE COMPLETED,
 PRELIMINARY LOCATIONS SHOWN HERE.



ELECTRICAL LIGHTING PLAN
 SCALE: 1/8"=1'-0"



BSMT. LIGHTING PLAN
 SCALE: 1/8"=1'-0"



MEZZ. LIGHTING PLAN
 SCALE: 1/8"=1'-0"

ELECTRICAL FIXTURE SCHEDULE

MARK	QTY.	DESCRIPTION
A	(4)	PENDANT FIXTURE RECOVERED FROM ST. PAUL'S SCHOOL, NEEDS RETRO-FITTING/REWIRING, LOW-ENERGY DESIGN
B	(6)	PENDANT FIXTURE, REJUVENATION, MODEL: BRIGHTWOOD #AA0110, 60W., 1 BULB.
C	(15)	PENDANT FIXTURE BY FOCAL POINT, MODEL: FUSION # FSN-RUW-2-42TT-1C-120-S-C24, 42W. 2 BULBS.
D	(11)	FLUSH FIXTURE, REJUVENATION, MODEL: SABIN #AA7029, 60W., 1 BULB.
E	(5)	SCONCE FIXTURE, ST. HELENS, MODEL: W151, 100W., 1 BULB.
F	(10)	FLUSH FIXTURE, EXISTING, W/ PORCELAIN SKT, 60W., 1 BULB. (NEEDS SWITCHING/REWIRING)
G	(9)	SUSPENDED FIXTURE, EXISTING SHOP LIGHT FLUORESCENT, 80W., 2 BULBS. (COMPLETED)
H	(1)	PENDANT FIXTURE, DAMP LOCATION, T.B.D.
J	(2)	WALL MOUNTED, GUTH, MODEL: SUNDOWNER #SND14820LSI, 35W., 20 LED LIGHTS.
K	(2)	SUSPENDED FIXTURE, FINELITE SERIES: S10-PLVV-STO-278-91W, 36W., 1 BULBS.
L	(3)	RECESSED CAN LIGHTS, T.B.D.
M	(3)	PENDANT FIXTURE, T.B.D.

NOTE: OWNER MAY SUBSTITUTE EQUAL MODELS FOR ALL FIXTURE TYPES.

LEGEND

- \$ SINGLE POLE SWITCH, 48" AFF
- ⊕ NEW DUPLEX RECEPTACLE OUTLET
- GFI GROUND FAULT INTERRUPTER
- WP EXTERIOR GRADE RECEPTACLE BOX
- ⊙ 208 V JUNCTION BOX
- ⊙ 120V JUNCTION BOX
- ▼ NEW DATA/PHONE BOX
- ⊗ NEW L.E.D. EXIT SIGN WITH BATTERY BACKUP WIRED TO LOCAL CIRCUIT
- ⊗ NEW L.E.D. EXIT SIGN & EMERGENCY LIGHT WIRED TO LOCAL CIRCUIT
- ⊗ NEW L.E.D. EMERGENCY LIGHT WIRED TO LOCAL CIRCUIT
- ⊗ NEW 9 W L.E.D. EMERGENCY LIGHT W/ BATTERY BACKUP
- ⊗ NEW INDUCTION OUTDOOR LIGHT
- SOLATUBE

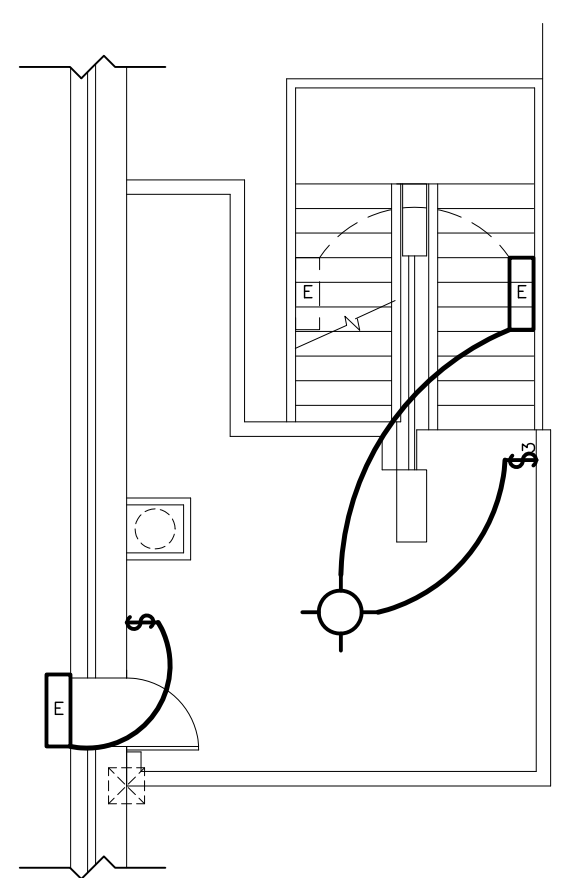
Green Garage GREEN GARAGE AS BUILT
 2-2-11 AS BUILT/IN PROGRESS

DATE	ISSUE FOR	REVISIONS
8-27-10	REV. PER OWNER	
8-17-09	FOR PERMIT	
8-3-09	OWNER REVIEW	

GREEN GARAGE RENOVATION
 4444 SECOND AVENUE
 DETROIT, MI 48201

Architects Planners Engineers
ARCHITECTS INTERNATIONAL INC.
 17400 Willemere
 Detroit, Michigan 48221
 Phone: 313-341-7930
 Fax: 313-341-6944

DESIGNED	TLB	CHECKED	TLB	PROJECT NO.
DRAWN	TLB	DATE	8-30-09	0923
APPROVED	TLB	DATE	8-30-09	
SHEET TITLE				SHEET NO.



FRONT MEZZ. LIGHTING PLAN
 SCALE: 1/8"=1'-0"