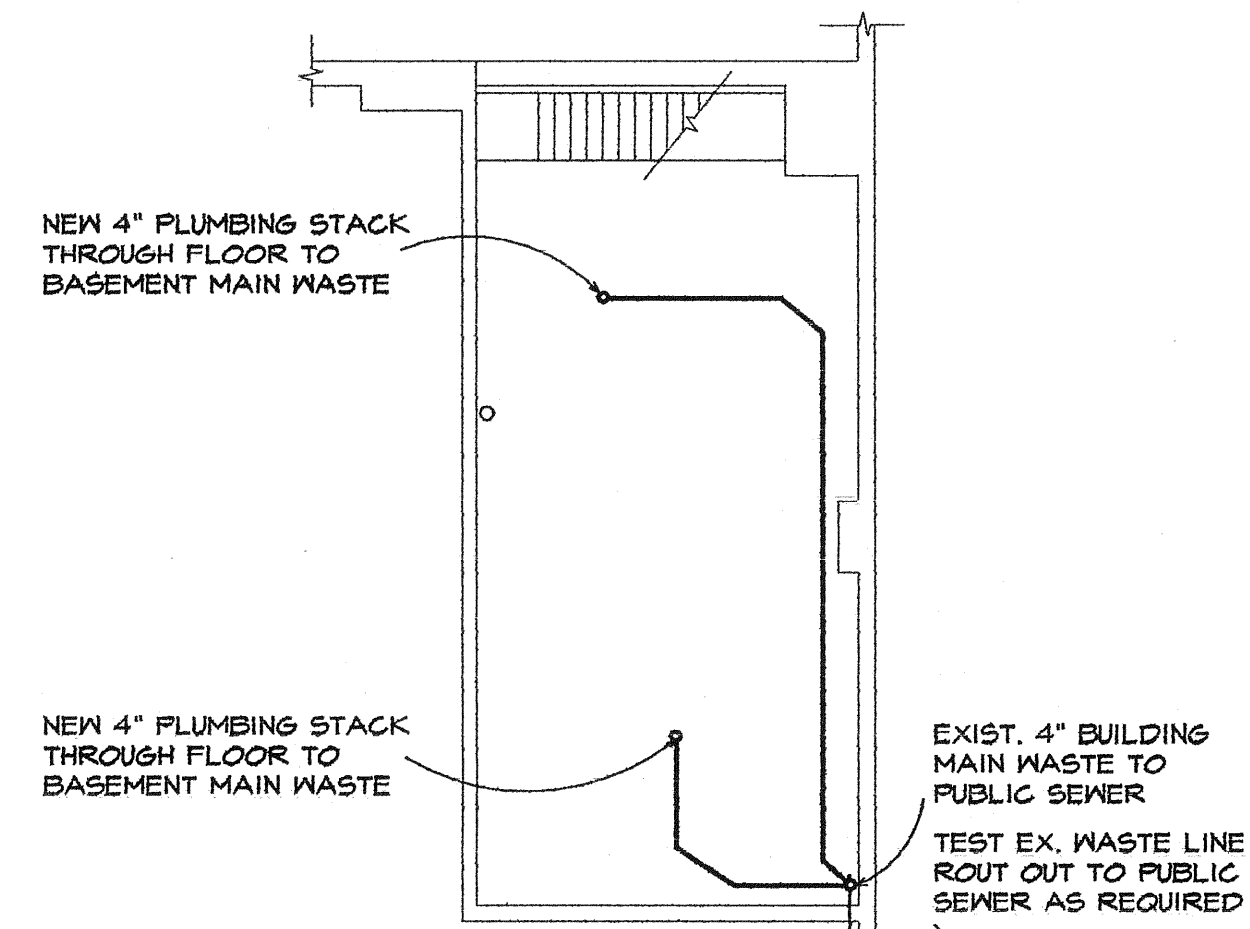
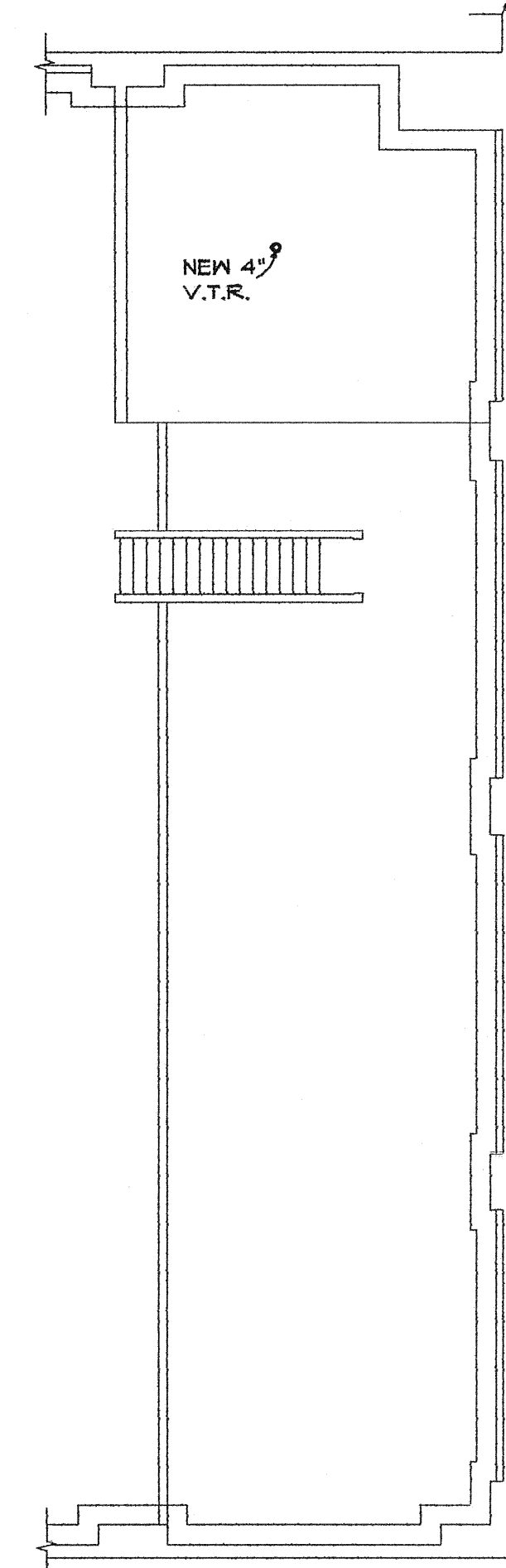


**PLUMBING PLAN**  
SCALE: 1/8"=1'-0"



**BSMT. PLUMB PLAN**  
SCALE: 1/8"=1'-0"



**MEZZ. PLUMB PLAN**  
SCALE: 1/8"=1'-0"

**PLUMBING NOTES**

1. Toilet facilities are designed for less than 25 employees.
2. Install or verify water hammer on incoming water service.
3. Tempered water control valves shall conform with ASSE 1016.
4. Sewer and water services shall comply with Michigan Plumbing Code.
5. All equipment with direct connection to potable water supply shall be equipped with back-flow preventer in compliance with Michigan Plumbing Codes.
6. All piping support shall comply with Michigan Plumbing Code.
7. Supply piping is to be overhead.
8. Provide Pate PC-1A at each pipe penetration of the roof.
9. All vents through roof must be a minimum of 10'-0" from all outside air intakes.
10. Insulate all supply plumbing lines throughout the building.

**LEGEND**

	CW	COLD WATER LINE
	HW	HOT WATER LINE
	W	WASTE LINE
	G	GAS LINE
	F.D.	FLOOR DRAIN
		INDIRECT WASTE
	C.O.	CLEAN OUT
	3" V.T.R.	VENT THROUGH ROOF
	W	WATER METER
	G	GAS METER

DATE	ISSUE FOR	DATE	BY	BULLETIN
8-17-09	FOR PERMIT			
7-30-09	OWNER REVIEW			

GREEN GARAGE RENOVATION  
4444 SECOND AVENUE  
DETROIT, MI 48201

*Architects Planners Engineers*  
**ARCHITECTS INTERNATIONAL INC.**  
17400 Wildemere  
Detroit, Michigan 48221  
Phone: 313-341-7930  
Fax: 313-341-6944

DESIGNED TLB	CHECKED TLB	PROJECT NO.
DRAWN TLB	DATE 7-30-09	<b>0923</b>
APPROVED TLB		SHEET NO.

**PLUMBING PLANS** P-1