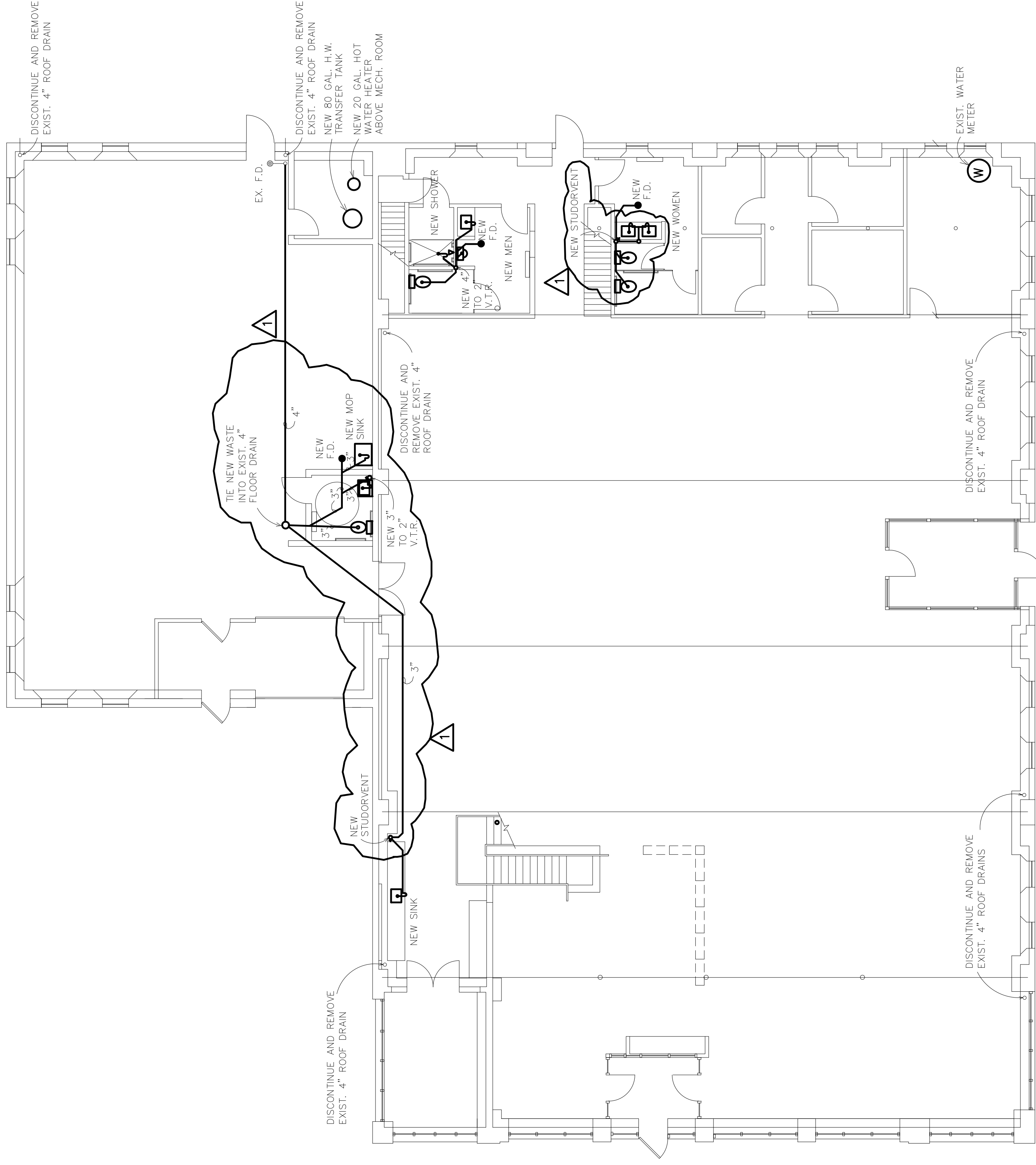
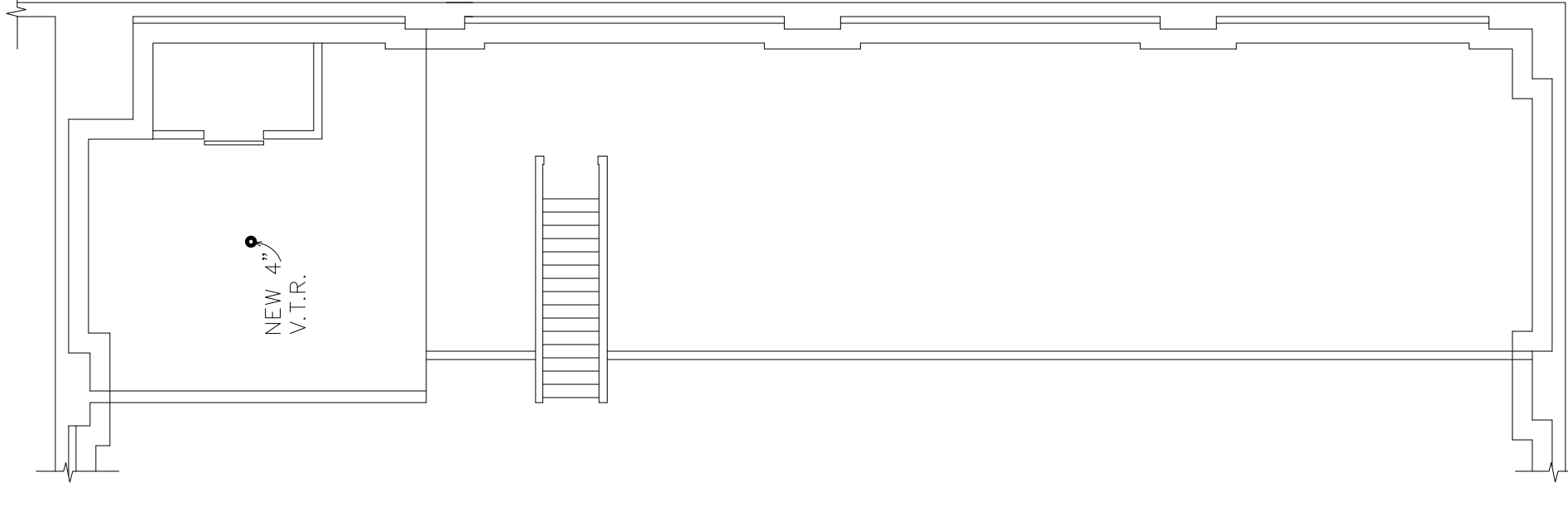


BSMT. PLUMB PLAN
SCALE: 1/8"=1'-0"



PLUMBING PLAN
SCALE: 1/8"=1'-0"

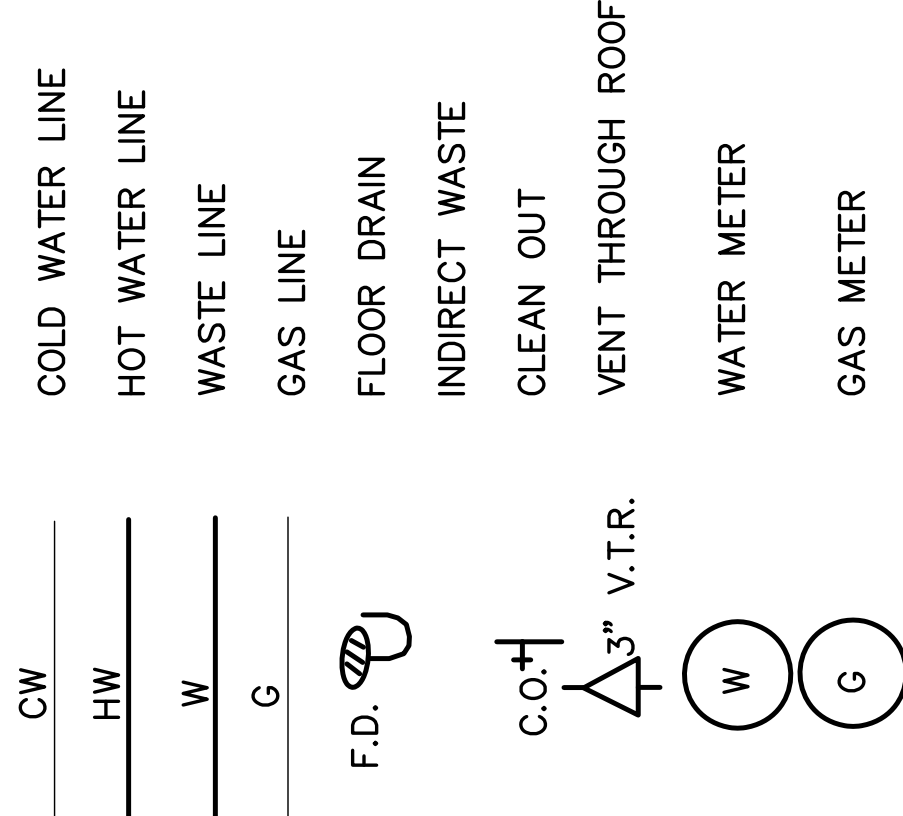


MEZZ. PLUMB PLAN
SCALE: 1/8"=1'-0"

PLUMBING NOTES

- Toilet facilities are designed for less than 25 employees.
- Install or verify water hammer on incoming water service.
- Tempered water control valves shall conform with ASSE 1016.
- Sewer and water services shall comply with Michigan Plumbing Code.
- All equipment with direct connection to potable water supply shall be equipped with back-flow preventer in compliance with Ohio Plumbing Codes.
- All piping support shall comply with Michigan Plumbing Code.
- Supply piping is to be overhead.
- Provide Pate PC-1A at each pipe penetration of the roof. All vents through roof must be a minimum of 10'-0" from all outside air intakes.
- Insulate all supply plumbing lines throughout the building.

LEGEND



5-27-10	REV. PER. OWNER			
8-17-08	FOR PERMIT			
7-30-09	OWNER REVIEW		DATE	BY
			ISSUE FOR	REVISIONS

GREEN GARAGE RENOVATION
4444 SECOND AVENUE
DETROIT, MI 48201

Architects Planners Engineers
ARCHITECTS INTERNATIONAL, INC.
17400 Wilshire
Beverly Hills, CA 90231
Phone: 313-341-7930
Fax: 313-341-6944

DESIGNED	TLB	DRAWN	TLB	CHECKED	TLB	DATE	7-30-09	
APPROVED	TLB							
SHEET TITLE							PROJECT NO.	0923
PLUMBING PLANS							SHEET NO.	P-1