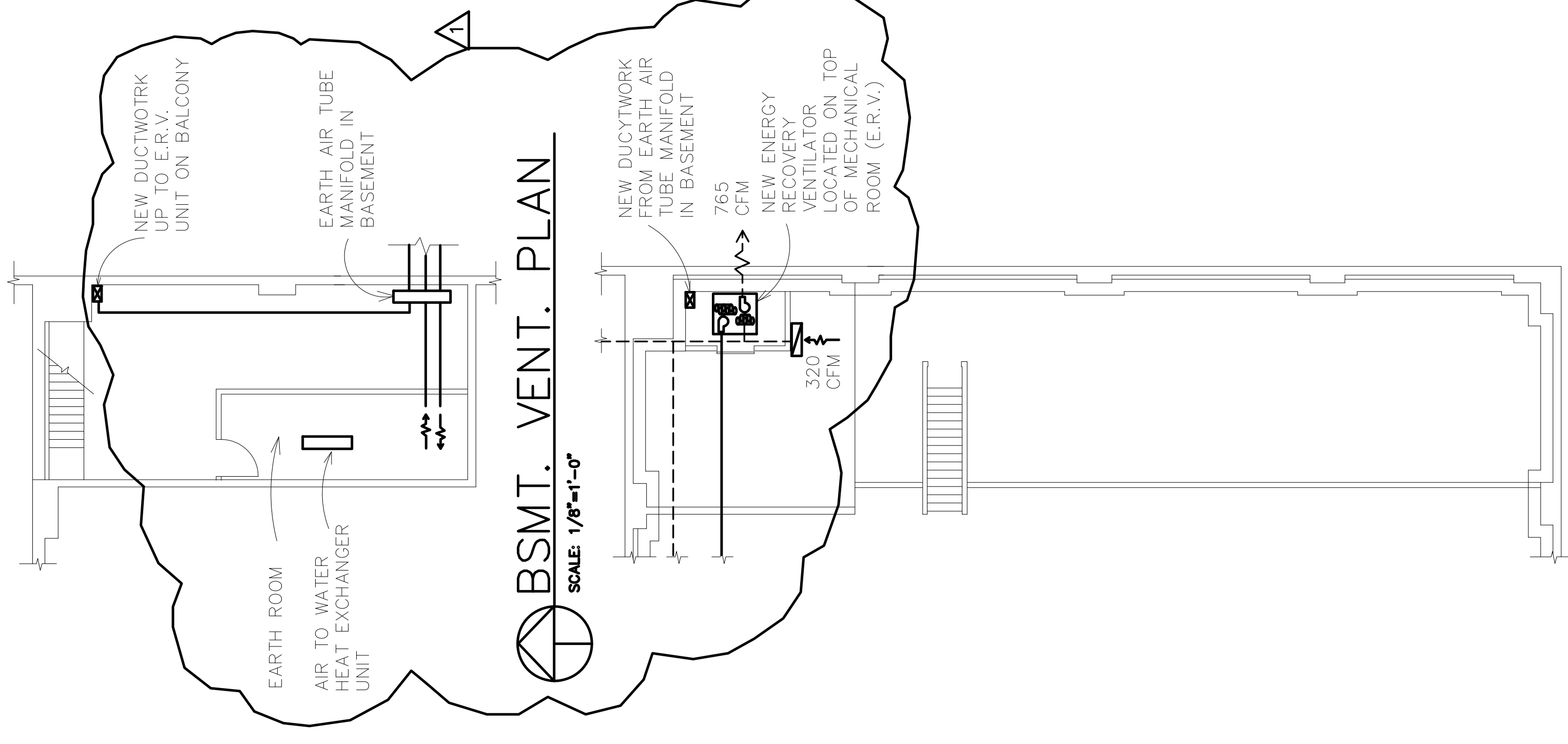


VENTILATION PLAN
SCALE: 1/8"=1'-0"



MEZZ. VENT. PLAN
SCALE: 1/8"=1'-0"

VENTILATION CALCULATIONS

OCCUPANCY PER ROOM x REQUIRED OUTSIDE AIR CFM PER "INTERNATIONAL MECHANICAL CODE"

- OFFICES (4) 20 PERSONS x 20 CFM = 400 CFM
- WORKSHOP 5 PERSONS x 20 CFM = 100 CFM
- MEN'S TOILET 3 PERSONS x 35 CFM = 105 CFM
- WOMEN'S TOILET 3 PERSONS x 35 CFM = 105 CFM
- WORKSHOP TOILET 1 PERSON x 35 CFM = 35 CFM
- SHOWER ROOM 40 SQ. FT. x .5 CFM = 20 CFM
- TOTAL REQUIRED OUTSIDE AIR: 765 CFM

LEGEND

- SUPPLY AIR REGISTER W/ 4 WAY ADJUSTABLE DIFFUSER
- ⊠ DOOR GRILL S.A. REGISTER OR DOOR UNDERCUT
- SUPPLY AIR DUCT
- ◻ RETURN AIR REGISTER W/ VOLUME CONTROL
- RETURN AIR DUCT

MECHANICAL NOTES:

1. All ventilation work shall be in accordance with the "Michigan Mechanical Code", the "International Mechanical Code" and the "American Society of Heating, Refrigeration and Air Conditioning Engineers" (ASHRAE).
2. Contractor is to size all ductwork to achieve design c.f.m.
3. Contractor is to assure that the Ventilation System will be installed to a fully operational condition. All controls are to be functional and the system will be complete.
4. Contractor is to balance the Ventilation System throughout the building.
5. All work is to be done by a Licensed Mechanical Contractor who will be responsible for all Permits and inspections related to the mechanical work.
6. Contractor is to supply Shop Drawings for the Energy Recovery Ventilator, (E.R.V.) and all ventilation equipment.
7. Contractor is to supply Shop Drawings and installation instructions for Air Tube System.

5-27-08	REV. PER OWNER		
8-17-08	FOR PERMIT		
8-5-09	OWNER REVIEW	DATE	BY
		ISSUE FOR	REVISIONS
GREEN GARAGE RENOVATION 4444 SECOND AVENUE DETROIT, MI 48201			
Architects Planners Engineers ARCHITECTS INTERNATIONAL, INC. 17400 Wixom Wixom, MI 48391 Phone: 313-341-7930 Fax: 313-341-6944			

DESIGNED	TLB	CHECKED	TLB	PROJECT NO.	0923
DRAWN	TLB	APPROVED	TLB	DATE	8-3-09
SHEET TITLE				VENTILATION PLAN	
				SHEET NO. M-3	